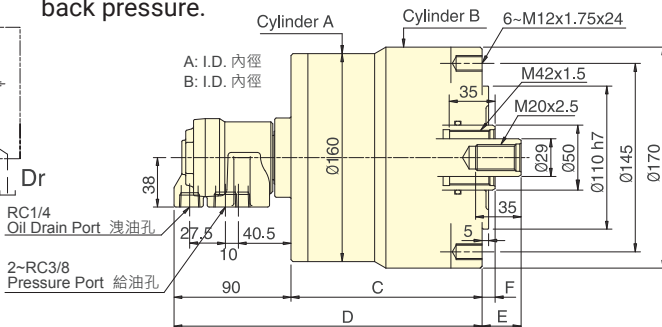
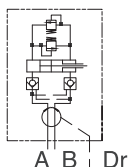
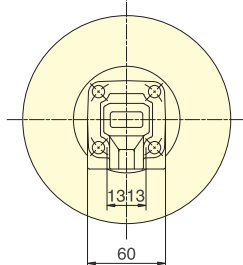


- 短型，輕量，雙桿型迴轉油壓缸。
- 內建逆止閥自鎖機構及壓力洩壓閥。
- For short form, light weight, double rod rotary cylinder.
- Built-in safety check valves and pressure relief valves.
- 洩油孔配管務必單獨接回油壓槽，以避免產生背壓。
- The drain port should be independently connected to oil tank to avoid back pressure.



保留規格修改的權利
Subject to technical changes

技術規格 SPECIFICATIONS

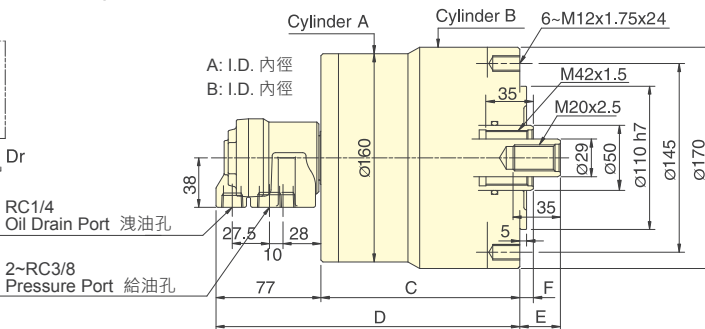
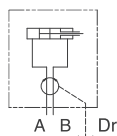
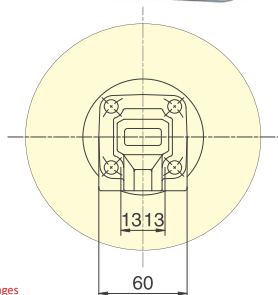
| 型號 | 活塞面積 Eff. piston area | | | | 行程 | 最高迴轉數 | 最高使用壓力 | I | 重量 |
|--------|-----------------------|-----------------|-----------------|-----------------|---------------|----------------------------|---------------------------|-------------------|--------|
| | 押側 (Extend) | | 拉側 (Retract) | | | | | | |
| Model | A | B | A | B | Piston stroke | Max. speed | Max. pressure | Moment of inertia | Weight |
| | cm ² | cm ² | cm ² | cm ² | mm | min ⁻¹ (r.p.m.) | MPa(kgf/cm ²) | kg·m ² | kg |
| RD-120 | 122.7 | 126.1 | 116.1 | 113.1 | 20 | 5000 | 3.0(30) | 0.14 | 11.3 |
| RD-125 | 122.7 | 126.1 | 116.1 | 113.1 | 25 | 5000 | 3.0(30) | 0.15 | 11.5 |

外型尺寸 DIMENSIONS

| Model | A | B | C | D | E max. | E min. | F max. | F min. |
|--------|-----|-----|-----|-----|--------|--------|--------|--------|
| RD-120 | 125 | 130 | 137 | 227 | 60 | 40 | 35 | 15 |
| RD-125 | 125 | 130 | 147 | 237 | 55 | 30 | 35 | 10 |



- 短型，輕量，雙桿型迴轉油壓缸。
- For short form, light weight, double rod rotary cylinder.
- 洩油孔配管務必單獨接回油壓槽，以避免產生背壓。
- The drain port should be independently connected to oil tank to avoid back pressure.



保留規格修改的權利
Subject to technical changes

技術規格 SPECIFICATIONS

| 型號 | 活塞面積 Eff. piston area | | | | 行程 | 最高迴轉數 | 最高使用壓力 | I | 重量 |
|---------|-----------------------|-----------------|-----------------|-----------------|---------------|----------------------------|---------------------------|-------------------|--------|
| | 押側 (Extend) | | 拉側 (Retract) | | | | | | |
| Model | A | B | A | B | Piston stroke | Max. speed | Max. pressure | Moment of inertia | Weight |
| | cm ² | cm ² | cm ² | cm ² | mm | min ⁻¹ (r.p.m.) | MPa(kgf/cm ²) | kg·m ² | kg |
| RD-120N | 122.7 | 126.1 | 116.1 | 113.1 | 20 | 5000 | 3.0(30) | 0.14 | 11.2 |
| RD-125N | 122.7 | 126.1 | 116.1 | 113.1 | 25 | 5000 | 3.0(30) | 0.15 | 11.4 |

外型尺寸 DIMENSIONS

| Model | A | B | C | D | E max. | E min. | F max. | F min. |
|---------|-----|-----|-----|-----|--------|--------|--------|--------|
| RD-120N | 125 | 130 | 137 | 214 | 60 | 40 | 35 | 15 |
| RD-125N | 125 | 130 | 147 | 224 | 55 | 30 | 35 | 10 |